



In command of the latest addition to the Fleet will be Captain Arthur George Patey (right), 59



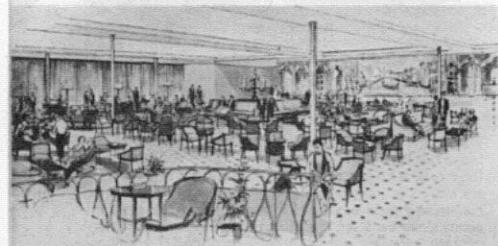
Mr. Arthur Mailer (left), 53, has been appointed Chief Engineer of the new Mailship



Above: Mr. Felix Kelly at work on one of the two murals, depicting scenes typical of the Cape, in the Dining Room of the Transvaal Castle

Above: Mr. Sidney Smith, F.R.S.A., captures the spirit of Venice en fête in the 36 feet wide mural he is completing in the Assembly Room of the Transvaal Castle

Below: An artist's impression of the Assembly Room, which is decorated in pastel shades. Situated amidships on the Promenade Deck, it can seat 300. There are large windows on both sides of the room and an area for dancing in the centre



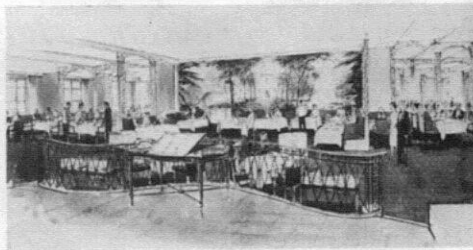
On 18th January, 1962, the Company's new Hotel ship will sail from Southampton on her maiden voyage.

Transvaal Castle is 700 feet long, 90 feet from port rail to starboard rail, and can carry over 700 passengers in great comfort. She is fitted with stabilisers, and every cabin and public room is air conditioned. The vessel has no "Class" barriers and passengers will have the run of the ship.

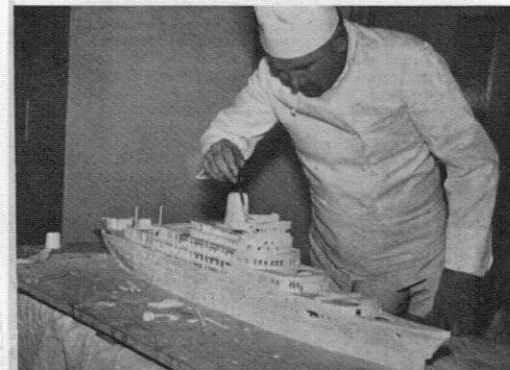
r.m.s. Transvaal Castle, 33,500 tons

In addition to the Dining and Assembly Rooms, amenities include an open air swimming pool, with a Verandah Café known as the Golden Room; a Cinema, Orangery Bar, Smoke Room, Writing Room and Library; a Drawing Room, Cellar Bar and Vineyard. There is a Gymnasium, with separate Physiotherapy facilities, a Beauty Parlour, Hairdressing Salons and a Shop. For children there is a special Playroom and Play-Deck. There is also a Laundry and a Garage for passengers' cars.

Below: An artist's impression of the Dining Room, which extends the full width of the vessel and seats over 400. In the centre there is a representation of a South African house and the dining area is in the nature of a garden surrounding the house

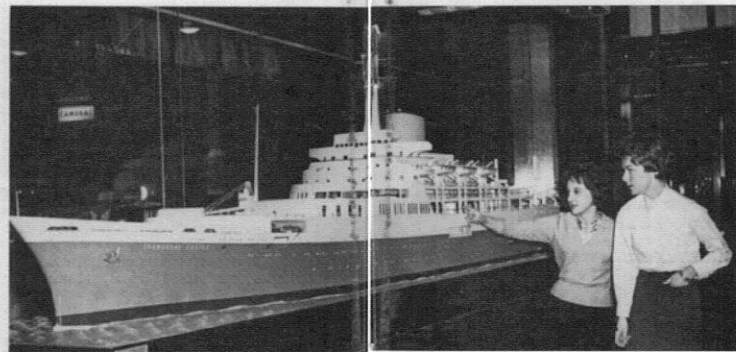


Below: Mr. A. Brohamer, Chief Baker and Confectioner of the Transvaal Castle, putting the finishing touches to a sugar icing model of the vessel. The model, internally illuminated, was displayed at a Rotherwick House Cocktail Party arranged for members of the Press to meet those responsible for the design and decor of the Company's latest ship



Below: Pat Gray and Susan Light (right) admiring the 16 feet long Bassett-Lowke model of the Transvaal Castle recently on display in the windows at Rotherwick House. The port side has transparent panels through which is revealed life on board in the evening as passengers prepare for dinner. The model has since been shipped to South Africa and is now on view in the Johannesburg Office

[Photo: Sport & General Press Agency Ltd.]



Below: From a hat full of names Sir Nicholas drew The Goldie Leigh Hospital, Abbey Wood, and from the Cocktail Party another model—made of fruit cake and beautifully iced—went to delight the young patients. Barbara Perkins, Press Officer (centre), points out some interesting features

[Photo: P.A.-Reuter Photos Ltd.]

